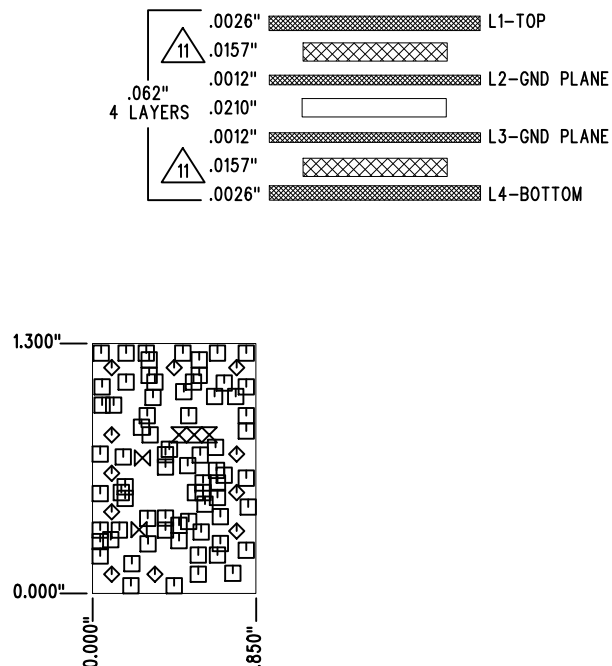


| REVISION HISTORY | | | | |
|------------------|-----|-------------|------|----------|
| ECO | REV | DESCRIPTION | APPR | DATE |
| - | 1 | PROTO FAB | KL | 01-04-17 |

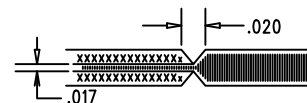
LAYER STRUCTURE



| SIZE | QTY | SYM | PLATED | TOL |
|-------|-----|-----|--------|----------|
| 0.01 | 73 | □ | YES | +/-0.003 |
| 0.04 | 3 | ⊗ | YES | +/-0.003 |
| 0.065 | 11 | ◇ | YES | +/-0.003 |
| 0.03 | 2 | ⊗ | YES | +/-0.003 |

NOTES: UNLESS OTHERWISE SPECIFIED

- FAB PER IPC-A-600.
- MATERIAL: -EPOXY FIBERGLASS, NEMA GRADE FR-4
-FINISHED THICKNESS TO BE 0.062" +/- .005"
-TOTAL OF 4 LAYERS WITH 2 OZ. CU ON THE OUTER LAYERS
AND 1 OZ. CU ON THE INNER LAYERS.
-FLAMMABILITY RATING: 94 V-0 MINIMUM.
- SIZE: CUT TO DIMENSIONS AND TOLERANCES SHOWN.
0.00 ARE PRIMARY DATUMS.
- DRILLING: -DRILL HOLES PER SCHEDULE. PLATE THROUGH
HOLES WITH COPPER, 0.001" THICK MIN.
-ALL HOLE SIZES ARE SPECIFIED AFTER PLATING.
-HOLE LOCATION TOLERANCES ARE +/-0.003"
IN RELATION TO CENTER
- FINISH: -SMOBC USING LPI BOTH SIDES, COLOR GREEN.
-GOLD IMMERSION BOTH SIDES.
-FOR SILKSCREEN: BOTH SIDES USE WHITE NON-CONDUCTIVE INK.
- DO NOT ALTER ARTWORK e.g. TO ADD LOGO OR DATE CODE.
PAD SIZE CAN BE MODIFIED TO MEET END FINISH.
- PCBS ARE TO BE RoHS COMPLIANT.
- DO NOT ALTER SOLDER MASK MAINTAIN .0018" OVERSIZE
ON SMT PADS. A .005" WEBBING IS REQUIRED BETWEEN SMD PADS.
- SCORING FOR PANELIZED PCB: "PRODUCTION FAB ONLY"
- CONTROLLED 50 OHM +/-5% IMPEDANCE FOR 25 MIL TRACES ON LAYER 1 ONLY.
TRACES CONNECTED TO AND FROM E9-E10 ARE TO BE FABRICATED AS 50 OHM T- LINES.
TDR CERTIFICATE REQUIRED.



11. SUBJECT TO CHANGE BY MANUFACTURER, DEPENDING ON
DIELECTRIC CONSTANT DEVIATIONS. PLEASE CONSULT LTC.

| | | | |
|---|-----------------------------|--------------------------|---|
| UNLESS OTHERWISE SPECIFIED DIMENSIONS ARE IN INCHES TOLERANCES ON ANGLE ±1 0.XX" = ±0.01" 0.XXX" = ±0.005" INTERPRET DIM AND TOL PER ASME Y14.5M-1994 | APPROVALS | | 1630 MCCARTHY BLVD MILPITAS, CA 95035 PH: (408)432-1900 www.Linear.com LTC CONFIDENTIAL- FOR CUSTOMER USE ONLY |
| | PCB DES. NC | | |
| | APP ENG. KL | | |
| | TITLE: FABRICATION DRAWING: | | |
| THIRD ANGLE PROJECTION | | | PRECISION DIFFERENTIAL AMPLIFIER |
| | | | SIZE N/A |
| DO NOT SCALE DRAWING | SCALE: NONE | IC NO. LTC6363CMS8 | REV. 1 |
| | | DEMO CIRCUIT 2655A-A/B/C | SHT 1 of 1 |